



Profilaxia

---

---

**Oxiurose - caseira**

Agente etiológico: \_\_\_\_\_

Transmissão: \_\_\_\_\_

Profilaxia: \_\_\_\_\_

**Bicho geográfico**

Agente etiológico: \_\_\_\_\_

---

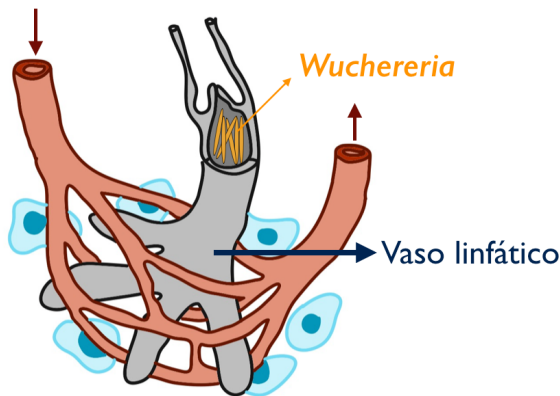
---

**Filariose - elefantíase**

Agente etiológico: \_\_\_\_\_

---

Verme se instala no sistema linfático



---

---

---

---

---

---

---

---

---

---

Transmissão: \_\_\_\_\_

Profilaxia: \_\_\_\_\_